



Cordless Riveter **R1B1**



T. Kita

DESIGN TOSHIYUKI KITA

www.aerofast.com.au

www.lobtex.co.jp

lobster@aerofast.com.au

Compact, fast, and easier to use.

Advanced Cordless Riveter

A high-performance yet compact cordless riveter has made its debut, going beyond the conventional norm.

This tool substantially improves work efficiency and precisely meets your needs when long hours of work are required.

It is a Lobtex masterpiece, with energy-saving and foolproof features, and it helps fulfill your desire to make your factory "cordless."

※The counter that counts the number of riveting operations is build-to-order.

R1B1 Product Identity

Energy-saving environmental friendliness

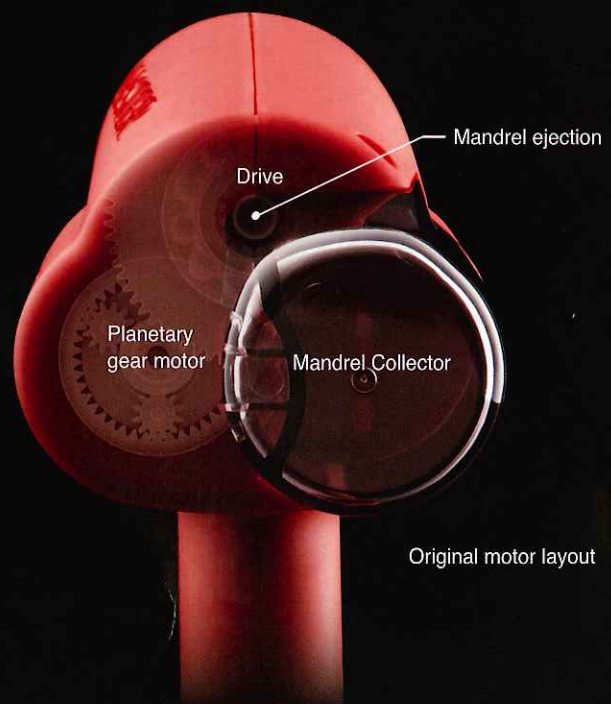
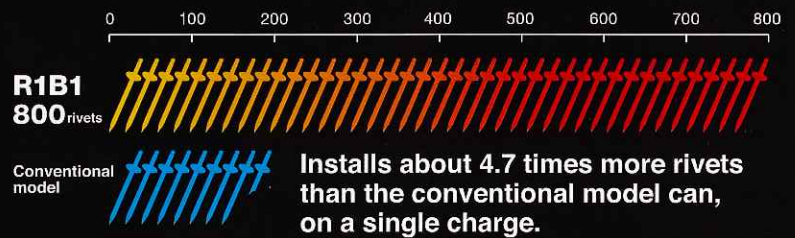
Installs four times more rivets than possible with conventional model on a single charge. The R1B1 riveter consumes only one forty-fifth of the power consumed by an air riveter thanks to a lithium-ion battery and energy-efficient power transmission system. (※1) This riveting tool installs 800 rivets on a single charge. (※2)

Functionality and aesthetic design

Easy-to-grip, well-balanced design in a fine innovative form. The R1B1 riveter, the work of product designer Toshiyuki Kita, is implemented in an aesthetically pleasing form with functionality kept strongly in mind. The handle offers a user-friendly grip and is shaped to provide a well arranged weight balance for reduced user fatigue.

Energy-efficient power transmission system

A ball screw that converts rotations efficiently to linear motions and planetary gear that transmits large torques are incorporated to ensure efficient energy transmission and smooth riveting.



Cordless Riveter **R1B1**

The smallest size and compact body in its class.

Lobtex's unique motor layout realizes more compact.

Shorter distance between Trigger and riveting section ensures ease of setting a rivet and even excellent operability.

riveting point

R1B1: 126 mm
Conventional model: 186mm

Trigger switch

Distinctive Features

High Speed Riveting

Achieves 1.1-second cycle time, placing it in the industry's fastest class of cordless riveters. Being substantially faster than previous models, the R1B1 helps make your factory cordless."

Handling

Ease of handling offers less user fatigue after long hours of work

The cordless design gives exceptional ease of operation. The handle is installed at an angle for positioning the tool toward the riveting point with ease. In addition, the tool's excellent weight balance causes less wrist fatigue after long hours of work. The grip-assist elastomer ensures reliable non-slippery grip for use with gloves.

MADE IN JAPAN tradition

LOBTEX has been manufacturing the products for over 120 years in Japan. By continuing Made in Japan tradition, we are providing products to the customers with safety and relief.



1 Mandrel Collector

Mandrel collector with increased mandrel holding capacity for improved work efficiency

The mandrel collector placed on the side allows for location of mandrel ejection port on the top of the tool. This design is effective for smoothly storing mandrels throughout the collector, resulting in an increased number of mandrels stored during work. Minimal work interruptions make riveting less frustrating.

3 Safety Device

Safety device to prevent mandrels from shooting out

In a case where the mandrel collector is dislodged or not fitted properly, a safety device is actuated to interrupt the riveter power supply and disable the trigger. This feature prevents mandrels from shooting out and ensures work safety.

5 Ejection Capability

Ejection capability in the event of unexpected operation stoppage

Even if the riveting tool stops working due to battery depletion with a rivet in the process of being clamped, it is possible to remove the rivet by pressing the eject button.



2 LED Spotlight

LED spotlight for precisely illuminating the object

Feel assured even when working in a dimly lit or narrow place. An LED spotlight illuminates the riveting area exclusively.

4 Made in Japan Battery

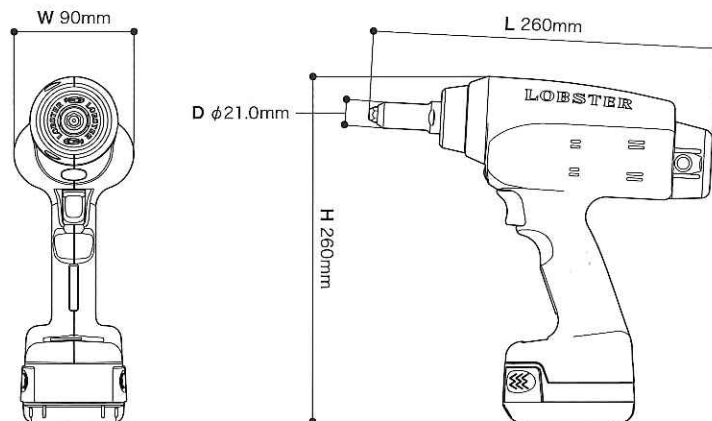
Highly reliable Japanese-made battery

A high-capacity lithium-ion battery, made in Japan, significantly increases the amount of work done during the battery's life. The R1B1 installs 800 rivets on a single charge. (※2)

6 Counter

Foolproof system well suited for riveting management

The R1B1 can be supplied with a digital counter (build to order). Unless each riveting cycle is complete, the counter does not advance, enabling the user to minimize overlooked work deficiencies or riveting defects and to achieve foolproof rivet number management.


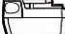

■ Riveter Specifications ※At the time battery pack BPL1415 is installed.

Overall Length (L)	Height (H)	Frame Head Diam. (D)	Width (W)	Weight	Stroke	Jaw	Compatible Rivets
260 mm	260 mm	φ21.0 mm	90 mm	1.9 kg	22 mm	Ultra Jaws'M'	All materials 2.4, 3.2, 4.0, and 4.8 mm in diam.

■ Package Items

Model	Package Item	Code No.	
R1B1	Riveter, battery pack (BPL1415), charger (BC0075G), special case	(230V) 8848	(120V) 8840
R1B1-C	※Contact the place of purchase or your nearest "LOBSTER" dealer for the price of R1B1-C and detailed specifications.	(230V) 8876	(120V) 8872

■ Battery Pack Specifications

Model	Type	Voltage Rating	Capacity	Charging Time (※)		Code No.
				Full Charge	Charge for Practical Use	
BPL1415 	Li-ion	14.4 V DC	1.5 Ah	60 min	45 min	8860
BPL14 	Li-ion	14.4 V DC	3.0 Ah	120 min	90 min	8856

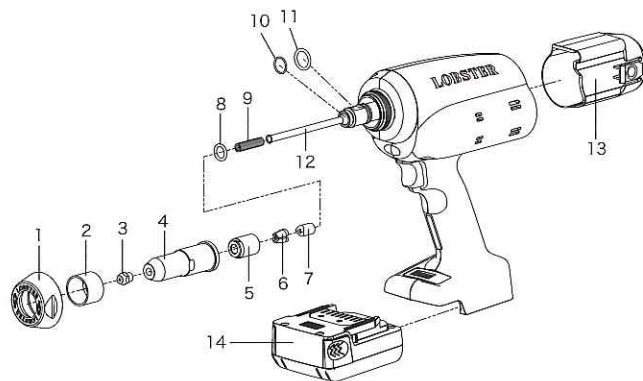
※Full charge: 0% → 100% Charge for practical use: 0% → 80%

■ Charger Specifications

Model	Power	Code No.	
BC0075G	100-240 V AC	(230V) 8900	(120V) 8896

■ Parts List

No.	Parts Table	Code No.	No.	Parts Table	Code No.
1	Frame Head Nut H	63917	7	Jaw Pusher @R	61875
2	Frame Head Damper	62835	8	O-ring P-12	10128
3-a	Nosepiece 2.4	10027	9	Jaw Pusher Spring JM	63730
3-b	Nosepiece 3.2	10028	10	O-ring S-10	10151
3-c	Nosepiece 4.0	10029	11	O-ring P-15	10405
3-d	Nosepiece 4.8	10030	12	Guide Pipe H	63913
4	Frame Head JM	63727	13	Mandrel Collector	63695
5	Jaw Case Head	10116	14	Battery Pack BPL-1415 (1.5Ah)	
6	Ultra Jaws (pair) 'M'	10281			



⚠ Caution for secure usage Be sure to read the enclosed Instruction Manual carefully and make sure that you understand them thoroughly before using this tool.

- Prices do not include consumption tax.
- All dimensions are nominal and subject to tolerances.
- Specifications are subject to change without prior notice.

(※1) Comparison with the compressor power consumption at the time of air riveter is used.

(※2) Measurement using 3.2mm stainless steel rivet (NST4-2).

www.aerofast.com.au

lobster@aerofast.com.au



LOBTEX CO., LTD.

International Marketing Group

TEL+81(72)981-7466 FAX+81(72)981-9420

12-8 Shijo-Cho, Higashi-Osaka City, Osaka 579-8053 Japan

URL : www.riveter.com www.lobtex.co.jp/

No.13W-6500TO

www.lobtex.co.jp